



Enable reliable, flexible, and highly secure connectivity in education

inseego.com



Connectivity and collaboration at every level



A strong, dependable network is the backbone of today's education environment, enabling connectivity and collaboration at every level. With a reliable, secure, and always-on network connection, students, faculty, and staff can communicate efficiently, share information, and access key resources anytime, anywhere. Students can stay updated on classes, collaborate on projects, or share ideas. Faculty can deliver remote lectures and provide additional support. And staff can ensure smooth operations across the campus ecosystem.

In today's learning environment, high-quality connectivity within and between buildings on campus can be a challenge. Distributed students also make seamless communication difficult, and the ability to remotely access critical capabilities continues to be a concern. Educational networks have also become a target for hackers, which makes it more important for institutions to ensure that their own information and that of students and faculty is always protected.

More powerful, wireless, and highly secure networks that can be more easily managed solutions are needed to address all these challenges.

Empower students and faculty with more reliable connectivity

A 5G fixed wireless access (FWA) network provides the high-speed, low-latency throughput that modern learning environments require. 5G wireless broadband networks support the powerful capabilities of advanced digital technologies to:

- Enhance on-campus operations by connecting buildings and outdoor spaces without the cost and time of laying fibre.
- Improve student outcomes by providing reliable home internet access to those in underserved areas, closing the digital divide.
- Limit security risks by using dedicated, encrypted connections for school-issued devices, keeping educational traffic separate from public or home networks.
- Maximize administrative efficiency by allowing staff to manage campus facilities and security systems remotely via a centralised cloud platform.
- Reduce barriers to learning with personal computing devices that can access research databases and virtual classrooms from anywhere on or off campus.
- Efficiently manage school transport by providing high-speed Wi-Fi on buses, allowing students to use travel time for homework and study.

Inseego 5G solutions enhance educational operations

Powerful 5G wireless networks provide the high level of control needed to support digital learning and enhance institutional operations with:

Greater bandwidth

Enables schools and universities to connect more devices simultaneously without compromising speed. With more bandwidth, institutions can support demanding applications, such as high-definition video lectures and immersive virtual reality learning, across the entire campus.

Low latency

Enhances the learning experience by allowing for real-time interaction in virtual classrooms and seamless access to cloud-based educational tools. This ensures that students and faculty can collaborate without the frustration of lag or buffering, regardless of their location

High reliability and security

With advanced VPN support, encryption, and rigorous network monitoring, sensitive student and institutional data stays protected. Our solutions also offer seamless failover to cellular, ensuring that learning is never interrupted by a primary connection failure.



A foundation for the future of learning



Inseego Wavemaker
5G outdoor CPE FW2000

[View on inseego.com](#)

Inseego has deep experience in the education sector, providing the hardware and software needed to connect students and educators safely. Our 5G solutions are designed to meet the unique safety and regulatory requirements of educational institutions, such as CIPA compliance. As education becomes more mobile and digitized, solutions like Inseego Connect help IT teams manage massive device deployments with ease.

Bring high-speed learning to any location

The Inseego Wavemaker 5G Outdoor CPE FW2000 provides high-gain connectivity to campus buildings or student homes that struggle with traditional signal:

- **Extended reach** using high-gain antennas brings 5G fixed wireless access to rural or obstructed areas, ensuring no student is left behind.
- **Robust hardware** designed to withstand the elements, providing a permanent and reliable connection for campus extensions or outdoor learning labs.
- **Simplified setup** via the Inseego Mobile app allows for quick installation by school technicians or local service providers.



Inseego Wavemaker
5G Cellular Router FX4200

[View on inseego.com](#)

Seamless connectivity for students and staff

The FX4200 provides a high-capacity hub for larger campus areas or busy school offices:

- Support for up to 256 devices, making it the ideal choice for libraries, common rooms, or lecture halls where high-density connectivity is required.
- Integrated backup battery ensures that even during a power cut, critical campus security systems and communications remain online.
- Advanced Wi-Fi 7 technology delivers the latest in wireless performance, future-proofing the campus network for years to come.

Secure “Office- Anywhere” connectivity for educators



MiFi® PRO M4 5G Mobile Router

[View on inseeGo.com](https://www.inseeGo.com)

The MiFi PRO M4 enables faculty and staff to take the secure corporate network wherever they work, ensuring they can access student records and lesson plans safely from any location:

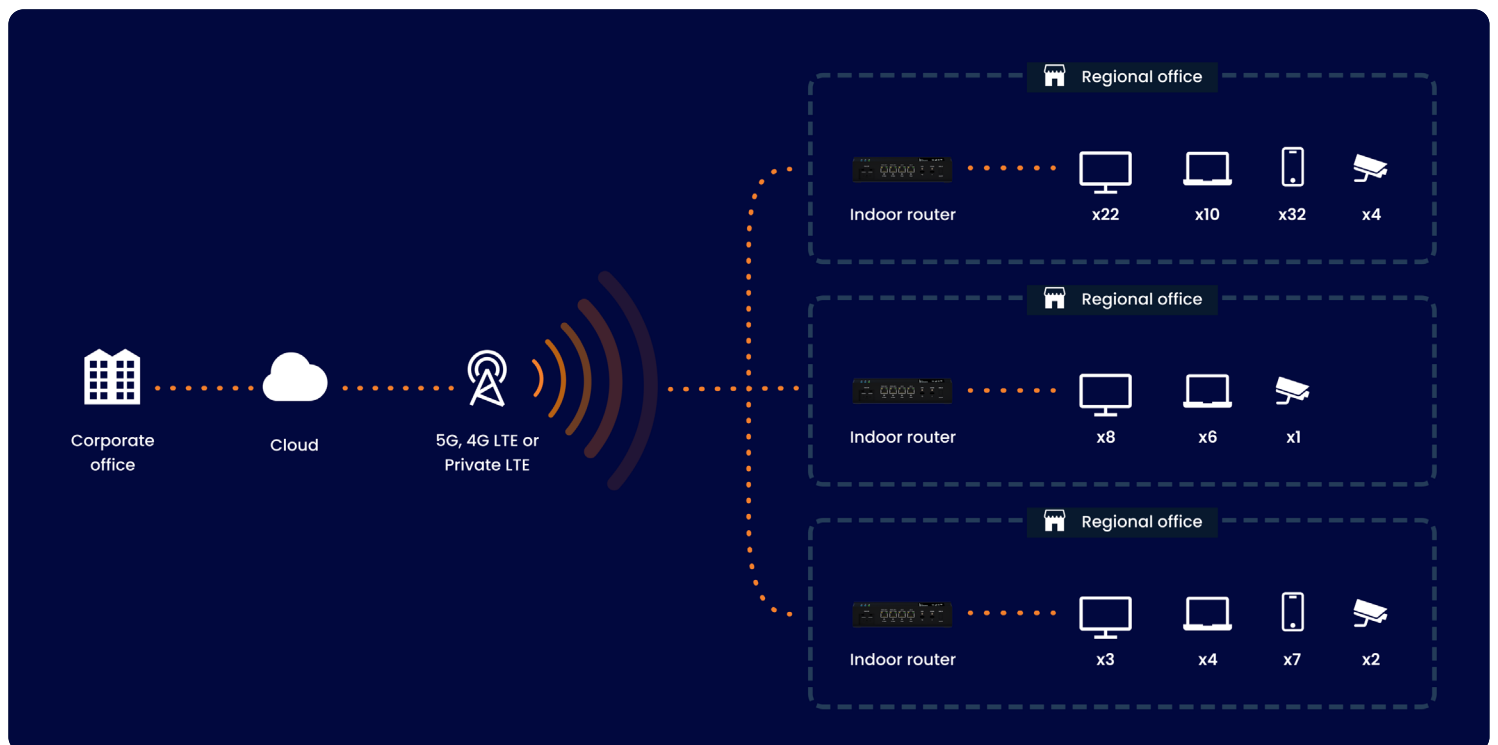
- Create an “Enterprise Bubble” with the MiFi PRO M4 to create a secure, isolated environment for school-issued devices, shielding sensitive educational data from public or unsecure home Wi-Fi networks.
- Advanced security with FIPS 140-3 validated cryptography, providing the highest level of protection for institutional information and student privacy.
- Reliable connectivity with industrial-grade thermals and battery-less AC operation, allowing the device to serve as a permanent, secure gateway for remote offices or temporary learning sites.
- Support for up to 50 simultaneous connections with Wi-Fi 7 and 5G Advanced, ensuring high-speed access for small study groups or off-site faculty meetings.
- TAA-compliant hardware with a 1 Gbps Ethernet port, offering a secure and versatile solution for government-funded educational projects.



Inseego Connect

Inseego Connect and the Inseego Mobile App empower school IT teams to manage thousands of student and faculty devices from a single, centralised dashboard:

- Zero-Touch Provisioning allows devices to be shipped directly to students or staff and configured remotely, requiring no technical expertise from the end-user.
- Track real-time signal strength, data usage, and device health to resolve connectivity issues before they impact a student's learning.
- Monitor network activity and apply remote security updates to ensure every connection remains compliant with institutional policies and safety standards.
- For mobile deployments like school buses, administrators can use real-time location tracking and geofence alerts to ensure hardware stays where it's intended to be.
- Perform bulk firmware updates and remote troubleshooting across thousands of devices simultaneously, allowing small IT teams to manage massive deployments efficiently.



Inseego Connect solution

Learn more

Discover how we enable the digital classroom — now and into the future. Contact us via our website or at partnersales@inseego.com.

About us

Inseego pushes the boundaries of 5G technology to revolutionize enterprise information technology (IT) and operational technology (OT) experiences for distributed sites and workforces. With 5G at the core of everything we do, we deliver innovations that transform the way businesses connect, access, and use information.