



Protect communities from threats and attacks

Inseego powers 5G public safety solutions for one of the largest cities in the U.S. to help protect communities during large events. As demonstrated in several smart-city environments, this cutting-edge technology provides real-time, 360-degree visibility with exceptional broadband speeds, extended range and robust connectivity so public safety and first responder teams can proactively address threats.

With this solution, cities can manage large gatherings with thousands of people at sporting and entertainment events. By connecting a city's camera assets through powerful Inseego 5G devices and cloud management software, public safety teams can gain a complete operational view, with instantaneous decision-making capabilities.

“Inseego’s industry-leading 5G devices are inter operable, adaptable and easy to deploy, and can make a big impact on public safety capabilities very quickly.”

Craig King, Executive VP at Discountcell,
NASPO ValuePoint PD180 Contract Holder

Industry-leading 5G public safety solutions with breakthrough performance, security and reliability

Inseego 5G solutions deliver multi-gigabit data speeds, extended network coverage and enterprise-grade security.

Easy to deploy

Inseego’s plug-and-play 5G Wavemaker™ indoor routers are CBRS ready and simple to set up. The IP67 outdoor 5G CPE’s offer a wide range of options for any environment and will extend your CBRS, 4G LTE or 5G network range.

Immediate benefits with future-proof features

With industry-leading technology, 24/7 reliability and ongoing feature roll-outs, Inseego 5G solutions deliver the best possible performance — today and tomorrow.

inseego

Inseego Connect™ cloud management

Inseego Connect provides centralized device management through a single pane of glass, enabling enterprise IT managers to oversee all their deployed Inseego 5G WAN devices. This device management portal empowers users at every level, from individual consumers to IT managers controlling expansive enterprise IoT networks.

Streamlined deployment

Remotely configure device settings

Easy monitoring

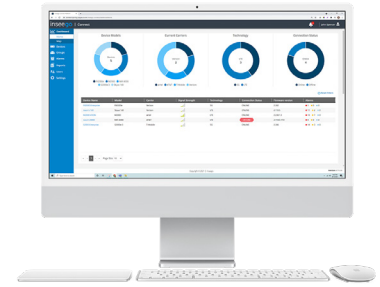
See device health and, track data usage and device location

Centralized management

Set data-usage alerts, push out software updates, get diagnostics and more

Informative dashboards

Tap into powerful, easy-to-use views of devices and metrics



FW2000e

Long-range outdoor solution for first-responder stations

Inseego Wavemaker™ PRO 5G outdoor CPE FW2000e

Ideal for rural and suburban fire stations, police stations and other locations with limited or no access to landlines for high-speed internet connectivity.

High-gain antennas

Delivers strong 5G and 4G LTE signals at long distances away from nearest cell tower.

Fast 5G connectivity

Provides significantly faster data speeds than limited wire-line options in many rural locations.

Advanced security

Protects sensitive data with best-in-class security, encryption and third-party penetration testing.

High-throughput gateway for fixed or mobile settings

Inseego Wavemaker™ PRO 5G industrial gateway S2000e

High-performance 5G, purpose built for mobile command centers and many other environments. Versatile. Scalable. Secure.

Continuous multi-gigabit connectivity

The only 5G industrial gateway with simultaneous 4x4 MIMO LTE and 5G. Get connected and stay connected with continuous, high-speed throughput.

Purpose-built design for quick setup

With multiple external antenna options, mounting options and power options, the S2000e industrial gateway can be installed quickly and easily in any environment.

Remote management for deployments

Inseego Connect provides visibility into your deployed S2000e, wherever it might be. Set up your S2000e and view device status, usage and more from wherever you are using your computer or the Inseego mobile app.



S2000e

inseego



FG2000e

Indoor solution for first-responder offices and substations

Inseego Wavemaker™ PRO 5G indoor CPE FG2000e

Reliable, secure and easy to set up, the FG2000e delivers 5G and advance router functionality with dual-band Wi-Fi 6 for up to 128 connected devices.

Proprietary antenna design for high-performing RF

Delivers blazing-fast internet access with breakthrough 5G and LTE speeds and best-of-network performance for a secure first responder office solution.

Superior connectivity

Dual-band Wi-Fi 6 with 4x4 MU-MIMO for up to 128 connections, plus multiple ethernet LAN and WAN ports, give first-responder offices many ways to securely connect.

Easy to install and get connected

The Inseego mobile app helps you find the optimal indoor location to set up the FG2000e and get started, and then it lets you remotely monitor and manage the device from anywhere.

High-speed performance for large offices and public events

Inseego Wavemaker™ PRO 5G outdoor CPE FW2010e

This high-performance 5G mmWave outdoor CPE delivers multi-gigabit data speeds and extended reach for urban and suburban first-responder offices and other sites.

Ultra-fast 5GmmWave

Brings multi-gigabit throughput to large office locations or other sites requiring high-speed, high-capacity performance.

Extended network coverage

High-power 5G mmWave radio expands network coverage up to 3 miles, extending the reach of mmWave services.

Enterprise-grade security

Maximum security at every level, with advanced features and services, to protect connections and sensitive data.



FW2010e

For more information or to learn about our other Inseego solutions for public safety:

Contact us



inseego.com



partnersales@inseego.com

Follow us



inseego